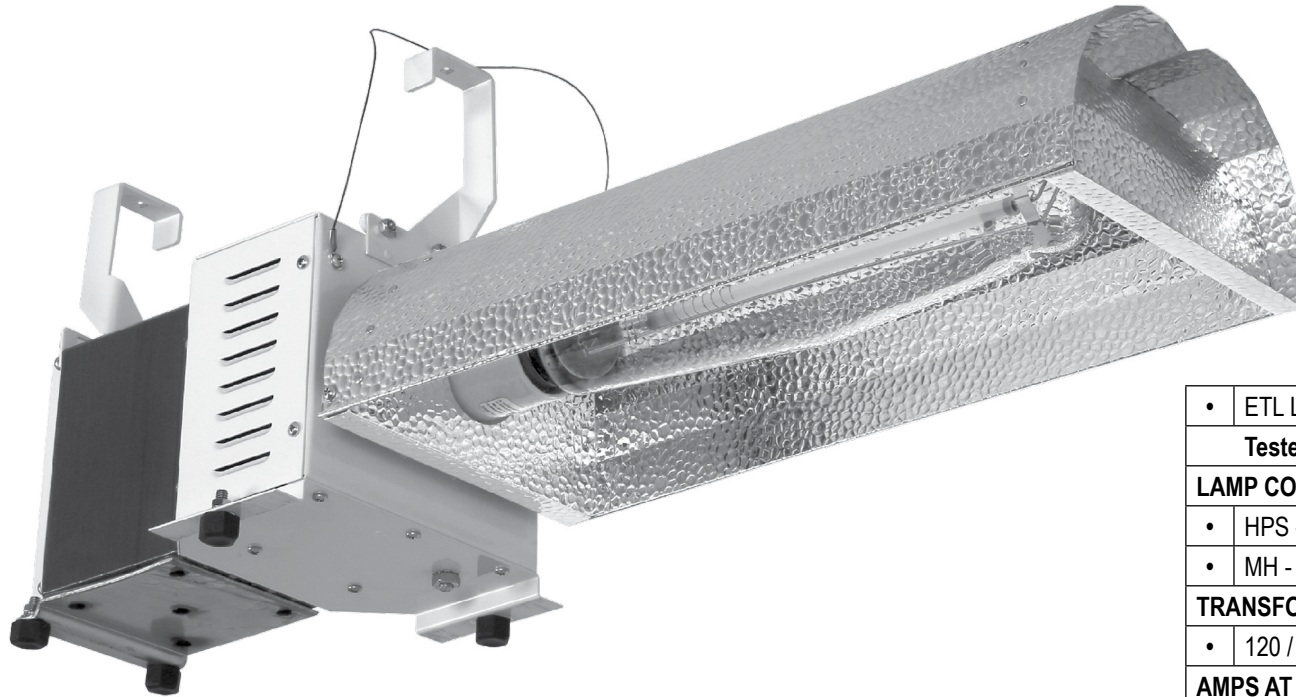


SPECIFICATIONS

Item #902692

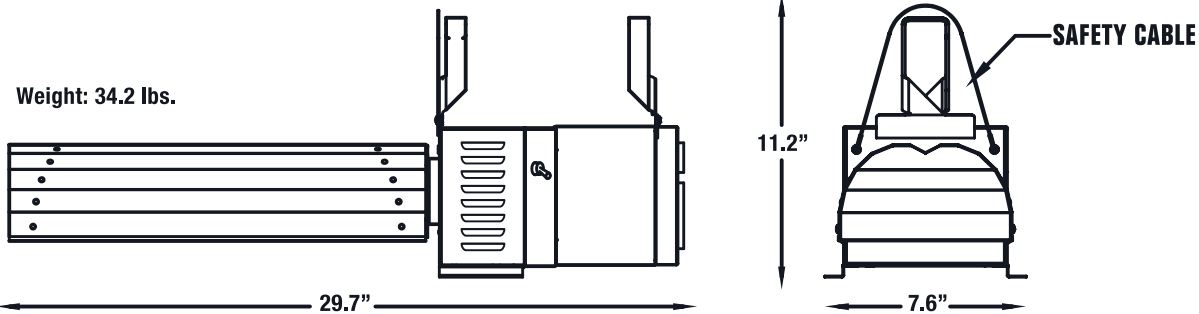


Sun System® ProMag™ 1000 Watt Switchable Quint-Tap Commercial Fixture



• = yes

• ETL LISTED
Tested to UL Standard #1598
LAMP COMPATIBILITY
• HPS - Max. Wattage: 1000
• MH - Max. Wattage: 1000
TRANSFORMER VOLTAGE
• 120 / 208 / 240 / 277 / 480
AMPS AT 120V POWER: 9.17 (HPS) / 9.92 (MH)
AMPS AT 208V POWER: 5.28 (HPS) / 5.67 (MH)
AMPS AT 240V POWER: 4.52 (HPS) / 4.92 (MH)
AMPS AT 277V POWER: 3.91 (HPS) / 4.25 (MH)
AMPS AT 480V POWER: 2.26 (HPS) / 2.45 (MH)
POWER SOURCE Hz: 60
AMBIENT TEMPERATURE: 40°C
POWER CORD
• NOT INCLUDED
MOUNTING HARDWARE
• UNISTRUT BRACKETS & SAFETY CABLE INCLUDED
• TRADITIONAL V-HANGERS ALSO INCLUDED
WARRANTY
• 2 YEAR



Sun System

This document is not intended to be used for installation purposes. We cannot cover all specific applications or anticipate all requirements. All specifications are subject to change without notice.