

Unit Part # 700058

10Ton Electric Electric

Cooling Performance					
Total capacity	118.0 MBH				
Sensible capacity	78.8 MBH				
Efficiency (at ARI)	11.20 EER				
Integrated eff. (at ARI)	11.40 IEER				
Ambient DB temp.	95.0 °F				
Entering DB temp.	80.0 °F				
Entering WB temp.	67.0 °F				
Leaving DB temp.	55.7 °F				
Leaving WB temp.	54.2 °F				
Power input (w/o blower)	9.18 kW				
Sound power	83 dB(A)				
Refrigerant					
Refrigerant type	R-410A				
Reheat Performance					
Total capacity	52.7 MBH				
Sensible capacity	1.6 MBH				
Ambient DB temp.	85 °F				
Entering DB temp.	75 °F				
Entering WB temp.	67 °F				
Leaving DB temp.	74.5 °F				
Leaving WB temp.	61.8 °F				
Power input (w/o blower)	8.13 kW				
Gallons of water per hour	5.83 gal/hr				
Heating Performance					
Entering DB temp.	60 °F				
Heating output capacity (Max)	87 MBH				
Nominal electric heat	36 kW				
Applied electric heat	25.5 kW				
Installed	Factory				
Supply air	3000 CFM				
Leaving DB temp.	86.9 °F				
Air temp. rise	26.9 °F				
Stages	2				
Supply Air Blower Performance					
Supply air	3000 CFM				
Ext. static pressure	0.6 IWG				
Addl. Unit Losses (Options/Accessories)	0.02 IWG				
Blower speed	914 RPM				
Max BHP of Motor (including service factor)	3.45 HP				
Duct location	Bottom				
Motor rating	3.00 HP				
Actual required BHP	1.52 HP				
Power input	1.42 kW				
Elevation	0 ft.				
Drive type	BELT				
Electrical Data					
Power supply	208-3-60				
Unit min circuit ampacity	100.5 Amps				
Unit max over-current protection	110 Amps				
Dimensions & Weight					
Hgt	51 in.	Len	89 in.	Wth	59 in.
Weight with factory installed options			1245 lbs.		
Clearances					
Right	12 in.	Front	36 in.	Back	36 in.
Top	72 in.	Bottom	0 in.	Left	36 in.

Note: Please refer to the tech guide for listed maximum static pressures



10 Ton

- DriFecta units are manufactured at an ISO 9001 registered facility and each rooftop is completely computer-run tested prior to shipment.

Unit Features

- Unit Cabinet Constructed of Powder Painted Steel, Certified At 1000 Hours Salt Spray Test (ASTM B-117 Standards)
- Through-the-Curb and Through-the-Base Utility Connections
- Either supply and/or return can be field converted from vertical to horizontal configuration without cutting panels.
- Full perimeter base rails with built in rigging capabilities
- Hinged Access Panels
- Standard Cabinet with Composite Drain Pan
- Scroll Compressors
- Two Stage Cooling
- Solid Core Liquid Line Filter Driers
- Microchannel Condenser Coil
- Standard Evaporator Coil
- 36 kW Factory Installed Electric Heat
- Slide-out Blower/3 HP Belt Drive Motor Assembly
- Unit Ships with 2" Throwaway Filters with a Standard Filter Rack that will Accept up to 4" Filters
- Replacement Filters: 4 - (24" x 20"). Unit accepts 2" or 4" wide filters.
- Single Point Power Connection
- Short Circuit Current: 5kA RMS Symmetrical

Standard Unit Controller: Simplicity Control Board

- An Integrated Low-Ambient Control, Anti-Short Cycle Protection, Lead-Lag, Fan On and Fan off Delays, Low Voltage Protection, On-Board Diagnostic and Fault Code Display. Allows all units to operate in the cooling mode down to 0 °F outdoor ambient without
- Safety Monitoring - Monitors the high and low-pressure switches, the freezestats, the gas valve, if applicable, and the temperature limit switch on gas and electric heat units. The unit control board will alarm on ignition failures, safety lockouts and re

Warranty

- One (1) Year Limited Warranty on the Complete Unit
- Five (5) Year Warranty - Compressors and Electric Heater Elements



Unit Part # 700058

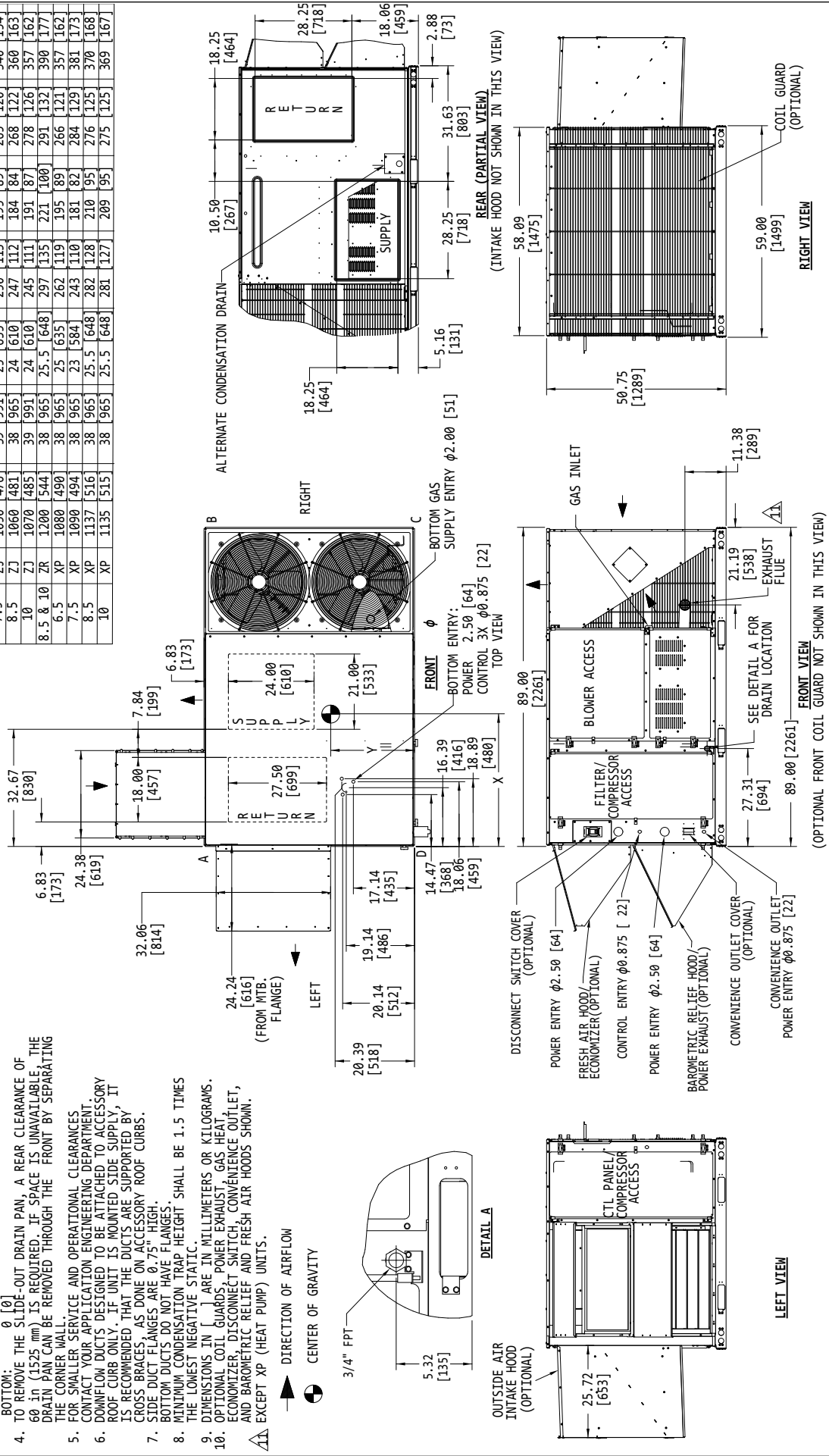
10Ton Electric Electric

Consolidated Drawing

TONNAGE	UNIT	OPERATING WEIGHT (LBS) (BASE UNIT)	CENTER OF GRAVITY LOCATION (BASE UNIT)				4 POINT CORNER LOADS (LBS) (BASE UNIT)						
			X	Y	A	B	C	D					
8.5	ZF	1007	458	24	610	235	107	175	79	255	116	342	155
10	ZF	1103	501	24	610	257	117	192	87	279	127	375	170
8.5	ZH	1030	467	38	965	24	610	240	109	179	81	261	118
10	ZH	1090	494	38	965	24	610	254	115	189	86	276	125
6.5	ZJ	1030	467	39	991	25	635	245	111	191	87	260	118
7.5	ZJ	1050	476	39	991	25	635	250	113	195	89	265	120
8.5	ZJ	1060	481	38	965	24	610	247	112	184	84	268	122
10	ZJ	1070	485	39	991	24	610	245	111	191	87	278	126
8.5 & 10	ZR	1200	544	38	965	25.5	648	297	135	221	100	291	132
6.5	XP	1080	490	38	965	25	635	262	119	195	89	266	121
7.5	XP	1090	494	38	965	23	584	243	110	181	82	284	129
8.5	XP	1137	516	38	965	25.5	648	282	128	210	95	276	125
10	XP	1135	515	38	965	25.5	648	281	127	209	95	275	125

NOTES:

- FOR OUTDOOR USE ONLY. COOLING ONLY UNITS.
- MIN. CLEARANCES TO BE:
- RIGHT SIDE: 12 [305]
LEFT SIDE: 36 [915]
FRONT: 36 [915]
REAR: 36 [915]
TOP: 72 [1830]
- TO REMOVE THE SLIDE-OUT DRAIN PAN, A REAR CLEARANCE OF 60 in (1525 mm) IS REQUIRED. IF SPACE IS UNAVAILABLE, THE DRAIN PAN CAN BE REMOVED THROUGH THE FRONT BY SEPARATING THE CORNER WALL.
- FOR SMALLER SERVICE AND OPERATIONAL CLEARANCES, CONTACT YOUR APPLICATION ENGINEERING DEPARTMENT.
- DOWNFLOW DUCTS DESIGNED TO BE ATTACHED TO ACCESSORY ROOF CURB ONLY. IF UNIT IS MOUNTED SIDE SUPPLY, IT IS RECOMMENDED THAT THE DUCTS ARE SUPPORTED BY CROSS BRACES, AS DONE ON ACCESSORY ROOF CURBS.
- SIDE DUCT FLANGES ARE 0.75" HIGH. BOTTOM DUCTS DO NOT HAVE FLANGES.
- MINIMUM CONDENSATION TRAP HEIGHT SHALL BE 1.5 TIMES THE LOWEST NEGATIVE STATIC.
- DIMENSIONS IN [] ARE IN MILLIMETERS OR KILOGRAMS. OPTIONAL COIL GUARDS, POWER EXHAUST, GAS HEAT ECONOMIZER, DISCONNECT SWITCH, CONVENIENCE OUTLET, AND BAROMETRIC RELIEF AND FRESH AIR HOODS SHOWN, EXCEPT XP (HEAT PUMP) UNITS.



Information is subject to change without notice. Check local codes.