

SLS part # 701614

System: 3 Ton Gas / Electric

Cooling Performance

Total gross capacity	36.7 MBH
Sensible gross capacity	28.1 MBH
Total net capacity	34.9 MBH
Sensible net capacity	26.3 MBH
Seasonal Efficiency (at ARI)	14.70 SEER
Efficiency (at ARI)	12.20 EER
Ambient DB temp.	95.0 °F
Entering DB temp.	80.0 °F
Entering WB temp.	67.0 °F
Leaving DB temp.	58.3 °F
Leaving WB temp.	57.3 °F
Power input (w/o blower)	2.30 kW
Sound power	77 dB(A)

Refrigerant

Refrigerant type	R-410A
------------------	--------

Reheat Performance

Total capacity	15.4 MBH
Sensible capacity	.3 MBH
Ambient DB temp.	85 °F
Entering DB temp.	75 °F
Entering WB temp.	67 °F
Leaving DB temp.	74.8 °F
Leaving WB temp.	63.3 °F
Power input (w/o blower)	2.21 kW
Gallons of water per hour	1.72 gal/hr

Gas Heating Performance

Entering DB temp.	60 °F
Heating output capacity (Max)	65 MBH
Supply air	1200 CFM
Heating input capacity (Max)	80 MBH
Leaving DB temp.	110.2 °F
Air temp. rise	50.2 °F
SSE	81.0 %
Stages	2

Supply Air Blower Performance

Supply air	1200 CFM
Ext. static pressure	0.6 IWG
Blower speed	742 RPM
Max BHP of Motor (including service factor)	1.73 HP
Duct location	Bottom
Motor rating	1.50 HP
Actual required BHP	0.58 HP
Power input	0.54 kW
Elevation	0 ft.
Drive type	BELT

Electrical Data

Power supply	208-3-60
Unit min circuit ampacity	18.2 Amps
Unit max over-current protection	25 Amps

Dimensions & Weight

Hgt	42 in.	Len	89 in.	Wth	59 in.	
Weight with factory installed options						962 lbs.

Clearances

Right	12 in.	Front	36 in.	Back	36 in.
Top	72 in.	Bottom	0 in.	Left	36 in.

Note: Please refer to the tech guide for listed maximum static pressures



3 Ton

- Ideal Air DriFecta units are manufactured at an ISO 9001 registered facility and each rooftop is completely computer-run tested prior to shipment.

Unit Features

- Standard Cabinet with Composite Drain Pan
- 80 MBH Input Aluminized Steel, Two Stage Gas Heat
- Either supply and/or return can be field converted from vertical to horizontal configuration without cutting panels.
- Unit Cabinet Constructed of Powder Painted Steel, Certified At 1000 Hours Salt Spray Test (ASTM B-117 Standards)
- Full perimeter base rails with built in rigging capabilities
- Reciprocating Compressor
- Unit Ships with 2" Throwaway Filters
- Solid Core Liquid Line Filter Driers
- Replacement Filters: 4 - (24" x 16"). Unit accepts 2" or 4" wide filters.
- Short Circuit Current: 5KA RMS Symmetrical
- Through-the-Curb and Through-the-Base Utility Connections
- Single Point Power Connection
- Micro-Channel "all-aluminum" condenser coil, Copper tube/aluminum fin evaporator coil
- Hinged Access Panels

Standard Unit Controller: Simplicity Control Board

- An Integrated Low-Ambient Control, Anti-Short Cycle Protection, Lead-Lag, Fan On and Fan off Delays, Low Voltage Protection, On-Board Diagnostic and Fault Code Display. Allows all units to operate in the cooling mode down to 0 °F outdoor ambient without
- Safety Monitoring - Monitors the high and low-pressure switches, the freezestats, the gas valve, if applicable, and the temperature limit switch on gas and electric heat units. The unit control board will alarm on ignition failures, safety lockouts and re

BAS Controller

- Simplicity SE Controller including Discharge Air, Return Air, and Outdoor Air Temperature Sensors

Warranty

- One (1) Year Limited Warranty on the Complete Unit
- Five (5) Year Warranty - Compressors and Electric Heater Elements
- Ten (10) Year Limited Warranty - Aluminized Steel Heat Exchanger



SLS part # 701614

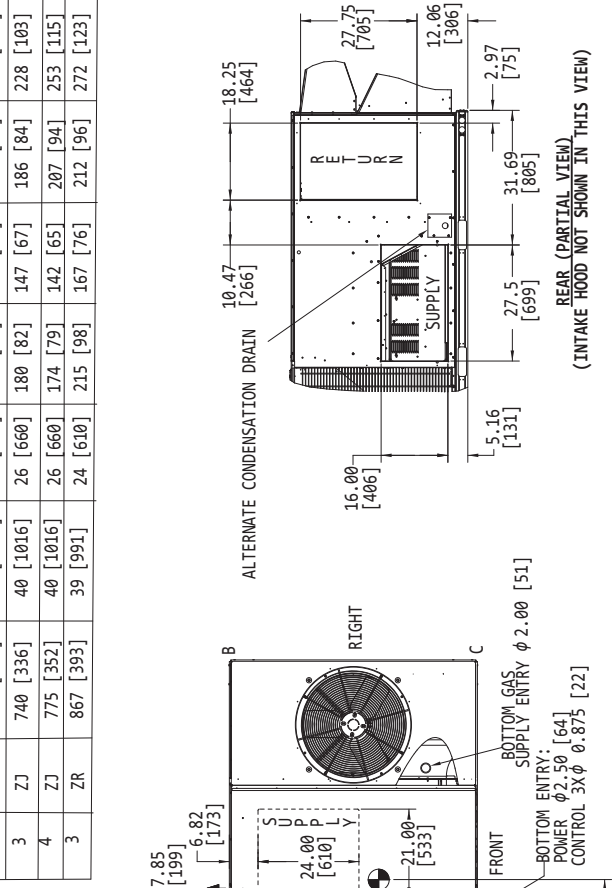
System: 3 Ton Gas / Electric

Consolidated Drawing

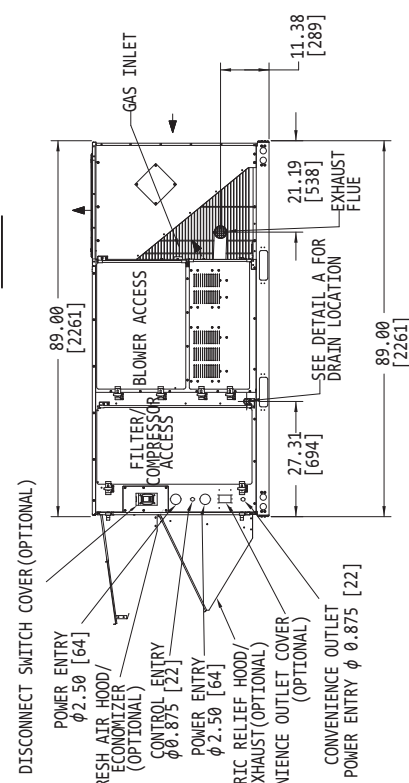
TONNAGE	OPERATING WEIGHT (LBS) (BASE UNIT)		4 POINT CORNER LOADS (LBS) (BASE UNIT)			
	U	I	A	B	C	D
3	ZH	723 [328]	175 [79]	143 [65]	182 [83]	223 [101]
4	ZH	763 [346]	185 [84]	151 [69]	192 [87]	235 [107]
3	ZJ	740 [336]	180 [82]	147 [67]	186 [84]	228 [103]
4	ZJ	775 [352]	174 [79]	142 [65]	207 [94]	253 [115]
3	ZR	867 [393]	39 [99]	215 [98]	167 [76]	272 [123]

Notes:

- FOR OUTDOOR USE ONLY.
- WEIGHTS SHOWN ARE FOR COOLING ONLY UNITS.
- MIN. CLEARANCES TO BE:
 RIGHT SIDE: 12 [305]
 LEFT SIDE: 36 [915]
 FRONT: 36 [915]
 REAR: 36 [915]
 TOP: 72 [1830]
 BOTTOM: \emptyset [0]
- TO REMOVE THE SLIDE-OUT DRAIN PAN, A REAR CLEARANCE OF 60 in (1525 mm) IS REQUIRED. IF SPACE IS UNAVAILABLE, THE DRAIN PAN CAN BE REMOVED THROUGH THE FRONT BY SEPARATING THE CORNER WALL.
- FOR SMALLER SERVICE AND OPERATIONAL CLEARANCES CONTACT YOUR APPLICATION ENGINEERING DEPARTMENT.
- DOWNFLOW DUCTS DESIGNED TO BE ATTACHED TO ACCESSORY ROOF CURB ONLY. IF UNIT IS MOUNTED SIDE SUPPLY, IT IS RECOMMENDED THAT THE DUCTS ARE SUPPORTED BY CROSS BRACES, AS DONE ON ACCESSORY ROOF CURBS.
- SIDE DUCT FLANGES ARE 0.75" HIGH.
 BOTTOM DUCTS DO NOT HAVE FLANGES.
- MINIMUM CONDENSATION TRAP HEIGHT SHALL BE 1.5 TIMES THE LOWEST NEGATIVE STATIC.
- DIMENSIONS IN [] ARE IN MILLIMETERS OR KILOGRAMS.
- OPTIONAL COIL GUARDS, POWER EXHAUST, GAS HEAT, ECONOMIZER, DISCONNECT SWITCH, CONVENIENCE OUTLET, AND BAROMETRIC RELIEF & FRESH AIR HOODS SHOWN.
- 8 TUBE HEAT EXCHANGER IS NOT AVAILABLE FOR 3 & 4 TON UNITS.



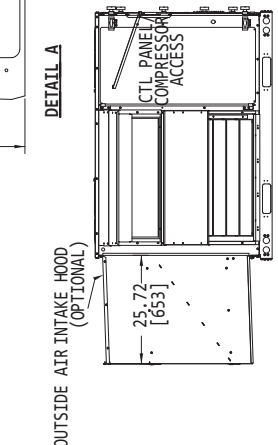
TOP VIEW



FRONT VIEW

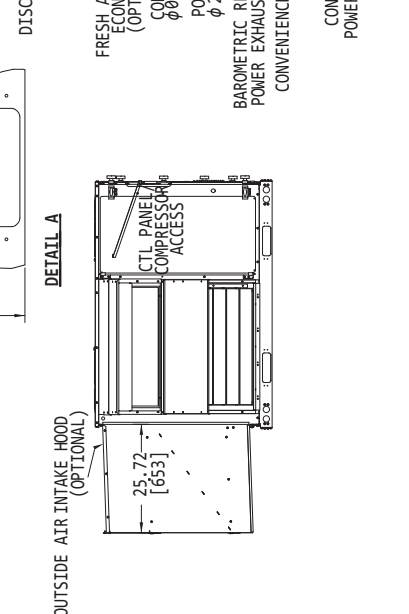
(OPTIONAL FRONT COIL GUARD NOT SHOWN IN THIS VIEW)

LEFT VIEW



LEFT VIEW

RIGHT VIEW



RIGHT VIEW